

# Quality Industrial Rubber Goods Since 1921



**Potomac** RUBBER COMPANY, INC.

**Potomac Rubber Company** • 9011 Hampton Overlook • Capitol Heights, MD 20743  
Tel: 301-336-7400 • Fax: 301-350-6543 • [info@potomacrubber.com](mailto:info@potomacrubber.com) • [www.potomacrubber.com](http://www.potomacrubber.com)

**RAINWEAR**

**FOOTWEAR**

**CLOTHING**

**SAFETY ITEMS**



## APRONS



PVC aprons

FEATURES: Protect against acids, caustics, chemical soaps. Wash clean easily.

COLOR	SIZE (inches)	STYLE	NECK & WAIST TAPES	HEM
Clear	35 x 45	.015 ga.	Neck sewed — waist riveted	Stitched

### BLACK RUBBER

FEATURES: Popular in factories, foundries, machine shops, warehouses, garages, etc. Car washer, double coated, resists acids, alkalis, oil, grease, chemicals.

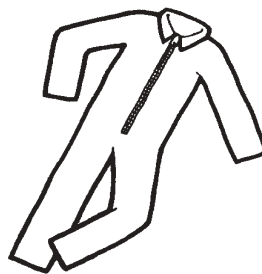
COLOR	SIZE (inches)	STYLE	NECK & WAIST TAPES	HEM
Black	35 x 45	Bench	Metal grommets—reinforcing patches	Stitched



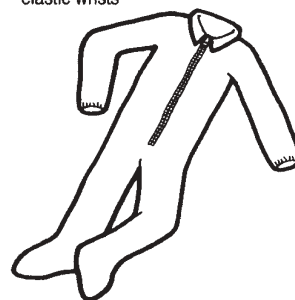
## Tyvek® Protective Apparel



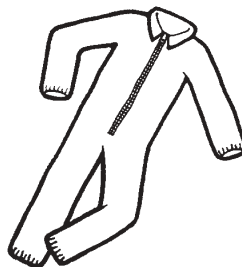
Zipper front  
COVERALL



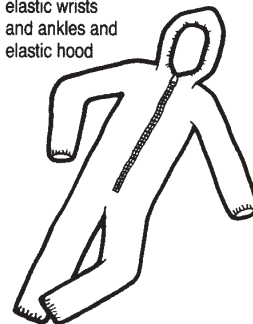
Zipper front  
COVERALL with  
boots and  
elastic wrists



Zipper front  
COVERALL with  
elastic wrists  
and ankles



Zipper front  
COVERALL with  
elastic wrists  
and ankles and  
elastic hood



## WATERPROOF PROTECTIVE CLOTHING

- PREMIUM QUALITY NEOPRENE COATED NYLON
- . FLAME RETARDENT
- .DOUBLE STICED & TAPED SEAMS
- .QUICK RELEASE SUSPENDERS
- .OFFERS EXCELLENT RESISTANCE TO MOST CHEMICALS, OILS AND ACIDS

### JACKETS



#3J800

OUR MOST POPULAR JACKET  
A MEDIUM PRICED GARMENT, WITH THE  
NECESSARY DELUXE FEATURES FOR  
FOUL WEATHER PROTECTION.  
SIZES S-XXXXXL



#3H800 SNAP ON HOOD

### BIB OVERALLS

OUR MOST POPULAR OVERALL. A MEDIUM PRICED GARMENT  
WITH ALL THE FEATURES AND REINFORCEMENTS NECESSARY  
FOR COMFORT AND PROTECTION  
SIZES S - XXXXXL

<i>Size Chart</i>		XS	S	M	L	XL	XXL	XXXL
Jackets	Chest	32-34	36-38	40-42	44-46	48-50	52-54	56-58
Bib Overalls	Waist	28-30	32-34	36-38	40-42	44-46	48-50	52-54
Coats	Chest	32-34	36-38	40-42	44-46	48-50	52-54	56-58



#3O800

### PONCHOS

#3P01

UNIVERSAL SIZE

YELLOW OR ORANGE



## COATS

THE BASIC WORK COAT FOR INDUSTRY  
PROVIDES FEATURES NECESSARY FOR COMPLETE  
PROTECTION AND EASY USE

#3C10B (black)

SIZES S - XXXL

#3267C\*\*\*\*\* (yellow)

SIZES S-5XL

## HATS

TRADITIONAL SOU'WESTER STYLE  
WIDE BRIM PROVIDES COMPLETE PROTECTION

SIZES: 7, 7-1/4, 7-1/2



## UTILITY RAINWEAR

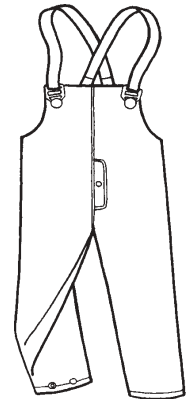
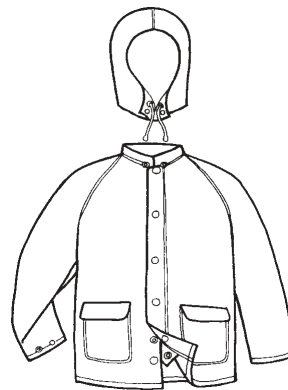
PVC/POLYESTER

#1030

AN ECONOMICAL CHOICE, TOUGH YET  
LIGHTWEIGHT

THREE PIECE SETS, JACKET-HOOD-  
OVERALL

SIZES: S - XXXL



## SAFETY VESTS

Chevron Vests have 1 3/8" reflective stripes on all sides, giving the wearer high visibility coming or going.

Style# CHEV20-orange with lime tape

- \* Two vertical stripes on the front.
- \* Three chevron stripes & two vertical stripes on the back.
- \* Horizontal stripes on side with hook and loop closure.

Great for:

- \* Construction workers
- \* Traffic direction
- \* Airport workers
- \* Anywhere visibility & safety is a top priority



front



back



# HEAD AND FACE PROTECTION



## HARD HATS

HIGH DENSITY POLYETHYLENE  
OFFERS BEST ON-THE-JOB PROTECTION.  
MEETS OR EXCEEDS ANSI  
STANDARD Z89-1-1969 CL A  
AND Z89-2-1971 CL B

THEY'RE COMFORTABLE, ATTRACTIVE, AND FEATURE EASILY REPLACEABLE  
NYLON SUSPENSIONS. ADJUSTABLE FROM SIZE 6 THROUGH 8  
MAY BE EMBOSSED ON FRONT OR SIDE. AVAILABLE IN MANY COLORS

## WINTER LINERS

WINTER LINER PROTECTS AGAINST  
COLD WEATHER AND WIND; ALL IN  
UNIVERSAL SIZE. HEAVY DUTY  
QUILTED NYLON OUTSIDE, WITH  
HI-PILE RED FLEECE INSIDE.



## FACESHIELD W/BACKET



RUGGED NYLON BRACKET  
CONFORMS TO  
MANY HAT STYLES.

FEATURES SPRING LOADED

LOCKING OF FOUR POSITION BRACKET, CAM-ACTUATED  
WINDOW POSITIONING. CURVED DIELECTRIC WINDOW.  
EASILY RAISED AND LOWERED OR REPLACED

## FACE SHIELD



LOW COST, LIGHTWEIGHT FACESHIELDS  
SLIP ON, OFF INSTANTLY FOR FULL FACE  
PROTECTION WITHOUT LIMITING VISION.  
FITS ALL HEAD SIZES

## SIGHT PROTECTION



## FLEXIBLE FRAME GOGGLE

SOFT FRAME, SINGLE LENS GOGGLES,  
PERFORATED OR STACK TRAP VENTS



## VISITOR'S SPECS

WIDE UPPER FRAME FITS OVER PLANT VISITORS'  
PRESCRIPTION GLASSES. CAN ALSO BE WORN BY  
PEOPLE NOT WEARING Rx GLASSES.

## HEARING PROTECTION

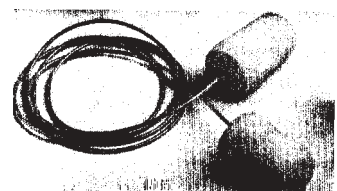
### EAR MUFF



GIVES MAXIMUM ATTENUATION  
IN DANGEROUS HIGH FREQUEN-  
CIES, YET ALLOWS NORMAL  
SPEECH TO BE HEARD

### EAR PLUGS

DISPOSABLE, IDEAL FOR  
CHEMICAL AND FOOD  
PROCESSING PLANTS



# Potomac RUBBER COMPANY INC.

## INDUSTRIAL FOOTWEAR

### OVER THE SHOE STYLES



### SLICKER BOOT

YELLOW

COMPLETE WATERPROOF PROTECTION

EXCELLENT COLD WEATHER FLEX

CLEATED OUTSOLE

FULL SIZES 7 - 16

### WORK ARCTIC

TRADITIONAL 5 BUCKLE BOOT

PREMIUM OZONE RESISTANT RUBBER

NONCORROSIVE BUCKLES

SELF-DRAINING GUSSET

FULL SIZES 7 - 15



### Pak-a-way® work rubber

lightweight rugged vinyl work overshoe in high cut pattern, expandable counter and shank for easy on and off, special compound is resistant to most oils and fats, and many solvents, highly skid resistant outsole.

# INDUSTRIAL FOOTWEAR

## OVER THE SOCK

### KNEE BOOTS , PLAIN TOE & STEEL TOE



HIGH QUALITY LOW COST PVC, NET LINED FOR EASY ON AND OFF, HIGH ABRASIVE WEAR, BLACK WITH BLACK OUTSOLE

FULL SIZES 7-13



STEEL TOE

## HIP BOOTS

30" HEIGHT, STEEL SHANK WITH HEAVY CLEATED OUTSOLE

FULL SIZES 7 - 13



## BODY WADERS

EXCELLENT FOR USE IN UTILITIES, MUNICIPALITIES, AQUACULTURE AND CHURCHES



**CHEST WADER SIZE CHART**

Boot Size	Dimension	Regular
7/8	CHEST OUTSEAM INSEAM	40-44" 53" 32-33"
9/10	CHEST OUTSEAM INSEAM	42-46" 55" 33-34"
11/12	CHEST OUTSEAM INSEAM	44-48" 57" 34-35"
13/14	CHEST OUTSEAM INSEAM	46-50" 59" 35-36"

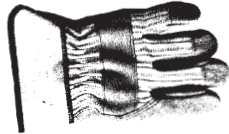


# Potomac RUBBER COMPANY INC.

## HAND PROTECTION

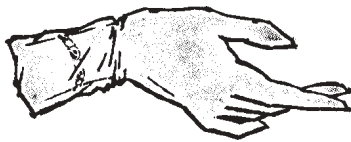
### GENERAL PURPOSE

#### LEATHER PALM



STD. DUTY  
#10202  
HEAVY DUTY  
10WA501

FOR HEAVY DUTY USE  
METAL WORK, STONE  
WORK,  
MATERIAL HANDLING.



#### TRU-TOUCH AMBI ALL-PURPOSE VINYL

Ideal for general, light duty uses. .0065" green vinyl is seamless, strong, liquidproof. Fits either hand. Disposable or reusable. Sulphur-free. S, M, L, Ex-L.

34-100 Dispenser Box: Contains 100 gloves of one size.



MF-300

#### POWDERFREE LATEX EXAM GLOVE

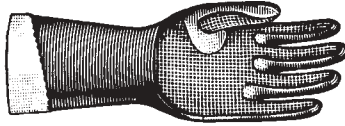
THE SURGEON'S-TYPE LATEX GLOVE  
DESIGNED FOR INDUSTRIAL USE  
HYPOALLERGINIC, AMBI- FIT, WITH TEXTURE GRIP  
SIZES MED, LARGE & XLG



SG-375  
POWDER-FREE LATEX  
TEXTURED FINISH  
SIZES , MED, LG & EX LG

## HAND PROTECTION

LIQUID & CHEMICAL

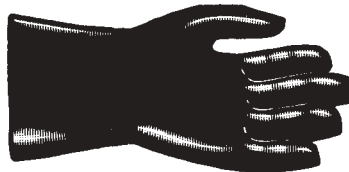


### TAN RUBBER

PREMIUM UNSUPPORTED

Embossed grip. Soft, cotton flock lining. "Case hardened" for extra resistance to abrasion, acids, alkalies, salts, ketones. Curved fingers, contoured palm. U.S.D.A. accepted.

26-665 .018" gauge, 13" length. Pinked cuff. Sizes 7-8-9-10-11.



### NEOX<sup>®</sup>

NEOPRENE COATED

Industrial weight coating. Resists snagging, cutting, acids, caustics, solvents. Curved fingers, wing thumb. Color: black.

9-928 18" fully coated gauntlet. Men's size.



G3112

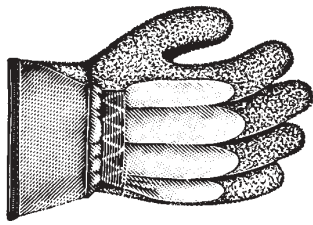
HEAVY DUTY PVC COATING ON JERSEY LINING WITH DOUBLE DIPPED SANDPAPER FINISH ON THE HAND AREA. LIQUIDPROOF WITH EXCELLENT WET DRY HANDLING



N-54

HEAVY DUTY MILLED NEOPRENE GLOVE

NEOPRENE SURFACE PROVIDES SUPERIOR CHEMICAL AND WEAR RESISTANCE, RELIABLE HAND PROTECTION AGAINST A BROAD RANGE OF CHEMICALS AND FLUIDS. RESISTS DETERIORATING EFFECTS OF OILS, ACIDS GREASES, FATS, GASOLINE, KEROSENE AND OTHER PETROLEUM DERIVATIVES

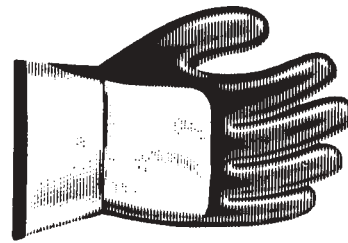


## **GOLDEN GRAB-IT®**

### **CRINKLE-FINISHED RUBBER**

Gold-colored, heavy-duty, crinkle-textured coating provides superior grip and cut resistance. Ideal for handling glass, sheetmetal, and tin plate.

16-307 Palm coated safety cuff. Men's size.

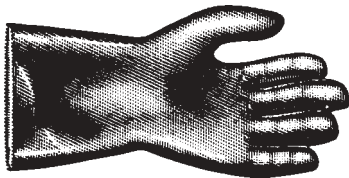


## **HYCRON**

### **NBR COATED**

Blue NBR coating gives superior service handling rough, abrasive items. Excellent flexibility, dry grip. Replaces leather and other coated gloves. Soft, 2-piece jersey lining. Curved fingers, wing thumb.

27-602 Fully coated knitwrist. Men's size.



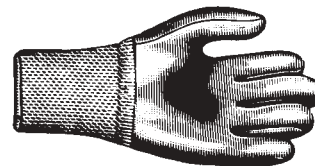
23-152

## **WINTER MONKEY GRIP**

### **FOAM INSULATED**

Foam insulation keeps hands warm. Tough vinyl coating is liquidproof, stays soft when cold. Resists abrasion, oil and many chemicals. Curved fingers, wing thumb.

23-152 12' fully coated gauntlet. Men's size.



## **WINTER FIREBALL®**

### **FLUORESCENT/FOAM INSULATED**

Foam insulation keeps hands warm. Super visible fire-orange color provides extra safety. Liquidproof vinyl coating stays soft when cold. Curved fingers, wing thumb.

23-491 Fully coated knitwrist. Extra long elastic wrist. Men's size.

## LINESMEN EQUIPMENT

### LINESMEN'S HIGH VOLTAGE GLOVES

Steam-cured natural rubber gloves with curved hand design, give superior electrical protection and maximum comfort in high voltage work.

Catalog Number	Length	Class Number	Test Voltage	A.C. Maximum Use Voltage**
E-1-14-B	14"	1	10KV	7,500
E-2-14-B	14"	2	20KV	17,000
E-3-14-B	14"	3	30KV	26,000
E-1-16-B	16"	1	10KV	7,500
E-2-16-B	16"	2	20KV	17,000
E-3-16-B	16"	3	30KV	26,000
E-1-18-B	18"	1	10KV	7,500
E-2-18-B	18"	2	20KV	17,000
E-3-18-B	18"	3	30KV	26,000
*E-4-18-B	18"	4	40KV	36,000

Suffix "B" designates Black (one color). To order Red and Black (two color) replace suffix "B" with "RB", e.g. E-1-14-RB.

Above gloves available in sizes 9, 9½, 10, 10½, 11 and 12.

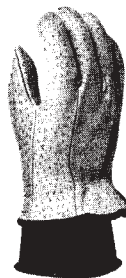
\*Class 4 gloves available in sizes 10, 10½, 11 and 12.

Above gloves available with Flare Cuff. Some are also available with Contour Cuff.

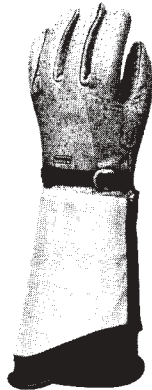


### GLOVE PROTECTORS

Grain leather protectors. Gunn cut, reinforced strip in thumb crotch, pull-tab, non-metallic strap buckle combination; palm portion of cuff is special leather, back side is fluorescent orange vinyl-coated fabric. Same quality features are also available in Low Voltage Protectors except shirred elastic in place of strap and buckle (no gauntlet).



Model LPP-10



Model LPP-7C

Catalog Number	Description	Length
LP-3S	Standard, Cowhide	12"
LP-5S	Standard, Cowhide	14"
LP-7C	Contour, Cowhide	16"
LPP-3S	Standard, Pigskin	12"
LPP-5S	Standard, Pigskin	14"
LPP-7C	Contour, Pigskin	16"
LP-10	Low Voltage, Cowhide	10"
LPP-10	Low Voltage, Pigskin	10"

### GLOVE INNERLINERS

Knitted fabric innerliners absorb moisture, eliminate rubber contact.

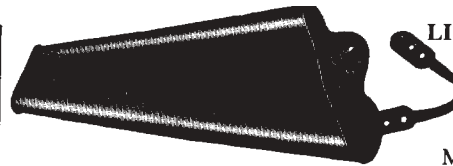
Catalog Number	Length
IL-1	11"
IL-1K	11" Knit Wrist
IL-4	14"



### LOW VOLTAGE GLOVES

For circuits up to 1000V, lightweight natural rubber 10½" glove in sizes 9 through 12, including half sizes in black.

Catalog Number	Class	Test Voltage
E-0-10-B	0	5KV



### LINESMEN'S SLEEVES

Natural rubber linemen's sleeves are seamless, hand-dipped for flexibility. Meet ANSI/ASTM

requirements in four classes: 10KV, 20KV, 30KV, 40KV.

Catalog Number	Length	Size	Class Number	Test Voltage	A.C. Maximum Use Voltage**
1-RG	26¼"	Regular	1	10KV	7,500
1-LG	28½"	Large	1	10KV	7,500
1-XLG	30"	Extra Large	1	10KV	7,500
2-RG	26¼"	Regular	2	20KV	17,000
2-LG	28½"	Large	2	20KV	17,000
2-XLG	30"	Extra Large	2	20KV	17,000
3-RG	26¼"	Regular	3	30KV	26,000
3-LG	28½"	Large	3	30KV	26,000
3-XLG	30"	Extra Large	3	30KV	26,000
4-RG	26¼"	Regular	4	40KV	36,000
4-LG	28½"	Large	4	40KV	36,000
4-XLG	30"	Extra Large	4	40KV	36,000

To order Red & Black (2 color) sleeves, add suffix "RB", e.g. 2-LG-RB.

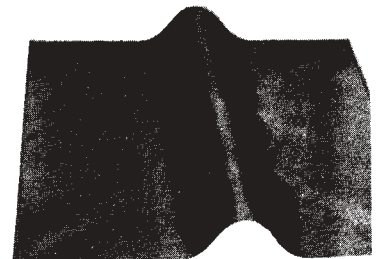
### SLEEVE STRAP, HARNESS, AND BUTTONS

Catalog Number	Description
SS-1	Standard Sleeve Strap (2 required per pair of sleeves)
SH-1	Sleeve Harness (1 required per pair of sleeves)
SB-1	One piece button (4 required per pair of sleeves)
SB-4	Orange vinyl screw type button (4 required per pair of sleeves)

### BLANKETS

• Polyisoprene "natural synthetic" blanket gives dependable protection and high dielectric strength.

• Non-conductive, corona-proof EPDM synthetic rubber blanket resists aging.



Catalog Number	Material	Size	Color	No. of Eyelets	Design	Class
CB-36	Polyisoprene	36" x 36"	Black	*8 or 28	Standard	2
CB-2736	Polyisoprene	27" x 36"	Black	8	Standard	2
CB-36-S	Polyisoprene	36" x 36"	Black	32	Slotted side	2
CB-36-EB	EPDM	36" x 36"	Black	8	Standard	4
CB-36-EO	EPDM	36" x 36"	Orange	8	Standard	4
CB-2736-EO	EPDM	27" x 36"	Orange	8	Standard	4
CB-36-S-EO	EPDM	36" x 36"	Orange	32	Slotted side	4

\*Orders should specify number of eyelets desired

\*\*A.C. Maximum Use Voltage in accordance with ASTM specifications, refers to (1) the phase-to-phase voltage on multi-phase circuits or (2) the phase-to-ground voltage on single phase (grounded) circuits.

### GLOVE BAGS & SLEEVE ROLL

Heavy-duty canvas duck glove bags store linemen's gloves without folding, snap to belt. Four sizes correspond to glove lengths . . . 10½", 14", 16", 18". Combination glove and sleeve bag stores gloves, sleeves without folding; only for daily use. Sleeve roll stores sleeves without folding, can be hung in truck.



